

***Wnt11*^{tz216/+} (AB) (CZRC catalog ID: CZ28)**

Nature of mutation

Tz216 allele was a mutant line, induced by the point mutagen ethyl nitrosourea (ENU) in the AB genetic background. The point mutation GGA (G155) to TGA (Stop) results in truncation of the protein. At bud stage, *Silberblick* mutants exhibit shortened and broadened body axis, flattened and elongated polster (anterior part of the prechordal plate). At 48 hpf, half of mutants show incomplete separation of eye, the eyes are slightly turned inward anteriorly, no further obvious abnormalities (Heisenberg and NussleinVolhard 1997).

Genotyping assay

Primers:

Tz216_forward: 5' TAAGCATGGGAGTATCATCTGT 3'

Tz216_reverse: 5' ATGGAACCCTGCTATGTCTAC 3'

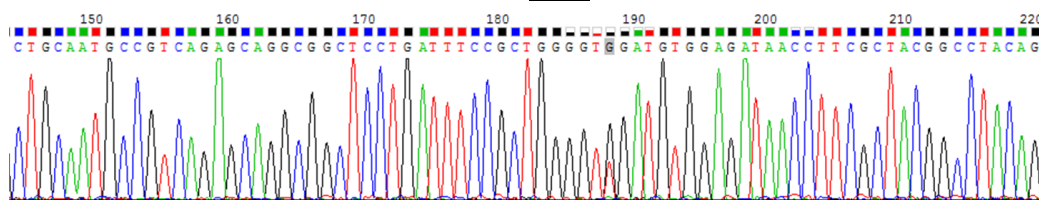
PCR program:

94°C 4min
94°C 30 sec
55°C 30 sec } 30 Cycles
72°C 30 sec
72°C 5min
4°C hold

Product size: 435 bp:

The sequencing results of the parents:

CZ28 (+/-) CTGATTCCGCTGGGGTGGATGTGGAGATAACC (wild-type)



Reference

Heisenberg, C. P. and C. NussleinVolhard (1997). "The function of *silberblick* in the positioning of the eye anlage in the zebrafish embryo." *Developmental Biology* 184(1): 85-94.